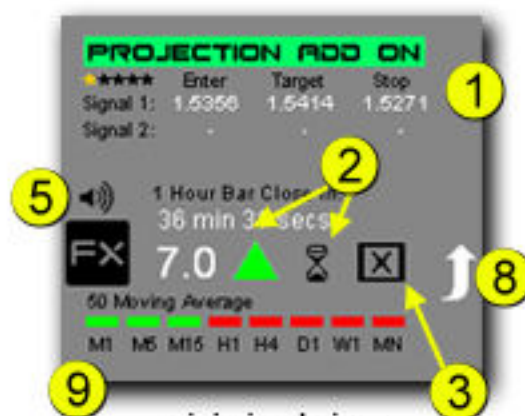


full scale view



minimized view

- 1 Price Projection Add-On** **PRO Version Only**  
Signal strength quality noted by 1-5 stars.  
Gives possible trade targets using conservative price levels
- 2 Signals 1 and 2**  
These are noted by the hourglasses and not to be confused with the WPR meter signal ☒ These signals attempt to locate minor and major reversal points
- 3 WPR Meter**  
Can be used in a variety of ways such as flow of trend direction, to located reversals on smaller time frames.  
This is more of a filter and not necessarily a trade signal
- 4 Stochastics Progression Gap**  
Price momentum can often be found when the stoch lines gap increases. When maxed out this often indicates market slowing, reversal or continuation of STRONG trends
- 5 Audible Price Alert**  
Custom sound alerts for each of 2 signals
- 6 Incoming Tick Speed**  
Attempts to measure incoming ticks for faster moving market speeds and increase of price momentum.
- 7 Connection To Broker**  
If MT4 disconnects or a long time passes without a new incoming tick... this turns from green to red
- 8 Minimize and Maximize Viewing**  
Dragging or pulling this arrow away from it's position will rotate the dashboard between full and minimized view.
- 9 Trade Filters**  
Use these filters for seeing the overall market and in helping you to decide the value of any trade signals. They are: Parabolic, MACD, Direction Filter and your own custom Moving Average.

## Thank You For Choosing The MTL FX Dashboard Indicator

\* Please note that the purpose and intentions of this device is to assist you in making better trade decisions.

There is no 100% proven, accurate or guaranteed trading method or device that we are aware of.

Therefore, we recommend that you trade only on demo until you become more familiar with successful trading techniques, backed up by an historic series of successful trades. We do not guarantee or warrant any of our products, nor attempt to make any claims of profitability. Trading comes with high risk and with that a very high risk that you will most likely lose money. Please trade with only what you can afford to lose.